

5000

Forage Wagon



Much more than just a simple wagon!



FACTORY ITAPIRA, SP



FROM BRAZIL TO ALL CONTINENTS OVER 50 COUNTRIES



FACTORY SÃO JOÃO DA BOA VISTA, SP

**Forage wagons line
JF, the solution for the farmer!**



FORAGE WAGONS LINE

JF 5000 Forage Wagon was developed to support the hard work that the field demands in harvesting and for both discharge in the silo and feed distribution direct in the trough.

Effective in the daily handling of forage, it features back discharge for storage in the silo and side discharge directly to the trough.

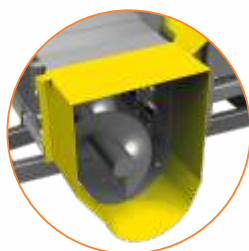
It is equipped with naval wood floor with steel bars driven by chains. It also has safety pins for overload protection of transmission.

Another great advantage of JF 5000 is the optional HydraFeeder with hydraulic control, which adds concentrate ration and other nutritional additives to the forage, with a precise control of dosing flow.

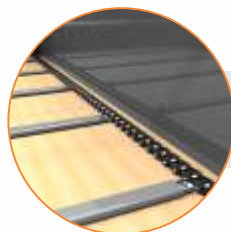


Side discharge

Rear discharge



REVERSIBLE AND AUTOMATIC DISCHARGE
Reversible mechanism for rear and side discharge with fully opening of rear doors



REINFORCED FLOOR
Fully bolted on, it makes easier the maintenance and transport. Featuring removable naval wood floor



HEIGHT ADJUSTMENT
Exclusive system allows adjustment of discharge height according to the trough (730 to 900mm)

TECHNICAL FEATURES	JF 5000
Height	234 to 253mm (with doser)
Discharge height	730 to 900mm
Capacity ¹	5m ³
Length	5900mm
Width	2000 to 2450mm
Weight (empty)	1550kg (with doser)
Wheels system	Simple
Tires	10,5 x 15 x 8 (2 units)
Required power at PTO	55 cv
Time for rear/side discharge ¹	2,5 minutes
Required revolution at PTO	540 RPM

¹The productivities are average evaluations obtained during test conditions and may vary according to the product humidity degree, specific weight and working conditions.

Advantages

- HydraFeeder (Optional) with hydraulic dosing control without leaving the tractor, adding homogeneously nutritional additives to the forage;
- Reversible discharge mechanism allows to change from side discharge to rear discharge fast and easily;
- Special reinforced chain, built in special steel with higher durability and perfect coupling between chains and sprocket wheel;
- Removable floor built in naval wood assuring higher floor durability with simpler maintenance, lower cost and less friction with chains, extending the life span of conveyor bars;
- Height adjustment with the exclusive JF 5000 system allows setting discharge height according to the height of trough (730 to 900mm).



JF 5000 with HydraFeed (optional)

HYDRAFEED DISPENSER
Dispenser with mixing and transporting auger



Technical description: Forage wagon for transporting and livestock feeding, with capacity of 5m³, powered by tractor PTO, featuring steel conveyor bars driven by chains built in special steel and removable floor built in naval wood, rolling fingers, full opening rear door, detachable draw bar, articulated jack, HydraFeeder with hydraulic control directly from tractor cabin (optional), PTO shaft transmission, reversible discharge system, discharge height adjustment, side discharge auger, auger for wilted forage (optional), safety system with safety pins for transmission protection, wheels and agricultural tires 10,5 x 15 x 8, required revolution at PTO of 540 RPM and required power at PTO starting from 55 hp.



The technical data and images are only for guidance purposes. In an effort to provide products that meet customer needs, the JF reserves the right to update them at any time without preview notice.

JF Máquinas Agrícolas

jfmaquinasoficial

JFMaquinasAgricolas

www.jfmaquinas.com

Rua Santa Terezinha, 921
Jd. Guarujá - Itapira/SP Brazil
Zip Code 13973-900
+55 (19) 3863-9644



9000_{S2}

Forage Wagon



Much more than just a simple wagon!



FACTORY ITAPIRA, SP



FROM BRAZIL TO ALL CONTINENTS OVER 50 COUNTRIES



FACTORY SÃO JOÃO DA BOA VISTA, SP

**Forage wagons line
JF, the solution for the farmer!**



FORAGE WAGONS LINE

JF 9000 S2 Forage Wagon, now with stainless steel side walls was developed to support the hard work that the field demands in harvesting and for both discharge in the silo and feed distribution direct in the trough.

Designed to meet the farmer needs and overcome the working challenges in the farm, it features some items that really make difference in the forage handling activities.

The highlights are the tandem system with four wheels working independently on both sides and the back and side discharge systems through the simple change of pins in the transmission. And the stainless steel side walls for greater durability, besides the rear door with full opening to the sides. All of that sums up in better performance and versatility.

Featuring durable and rust resistant wood floor with conveyor system, it has also safety pins for protection of transmission in the case of an overload. Another great JF 9000 advantage is the optional HydraFeeder with hydraulic control, which adds concentrate ration and other nutritional additives to the forage, with a precise control of dosing flow.

TECHNICAL FEATURES	JF 9000 S2
Height	2580mm
Discharge spout height	750mm
Capacity ¹	9m ³
Length	6680mm
Width	2500mm
Transport width	2000mm
Weight (empty)	2100 kg
Wheels system	Tandem
Tires	11L - 15 - 8 P
Required power at PTO	50 cv
Front discharge capacity ¹	2,5 m ³ /min
Back discharge capacity ¹	2 minutes
Required revolution at PTO	540 RPM

¹The productivities are average evaluations obtained during test conditions and may vary according to the product humidity degree, specific weight and working conditions.

Advantages

- High technology included in a trailer, making the forage handling in the farm more practical and quicker;
- New stainless steel side walls which increases corrosion and wear resistance;
- Tandem system on wheels for absorbing terrain irregularities and for less stress on wagon frame;
- Reversible discharge mechanism allows to change from side discharge to rear discharge fast and easily with full opening back door;
- Special reinforced chain, built in special steel with higher durability and perfect coupling between chains and sprocket wheel;
- Removable floor built in naval wood assuring higher floor durability with simpler maintenance, lower cost and less friction with chains, extending the life span of conveyor bars;
- HydraFeeder (Optional) with hydraulic dosing control without leaving the tractor, adding homogeneously nutritional additives to the forage.



GEARBOX TRANSMISSION
Strongest and of easy maintenance



TANDEM SYSTEM
04 wheels working independently



STAINLESS STEEL SIDE WALLS
Greater durability, corrosion and wear resistance.



SIDE DISCHARGE
Precision on discharging homogeneously in the trough



REAR DISCHARGE
Back door with full opening and fast discharge through its conveyor belt.



Heavy Duty Chassis
All assembled with bolts for easy maintenance and transport, equipped with rotating fingers for easy forage flow.

Forage Wagon JF 9000 attached with the optional JF HydraFeeder



Technical description: Forage wagon for transporting and livestock feeding, with capacity of 9m³, powered by tractor PTO, with stainless steel side walls featuring steel conveyor bars driven by chains built in special steel and removable floor built in naval wood, rolling fingers, back door with full opening, detachable header, articulated jack, HydraFeeder with hydraulic control (optional), transmission with full sealing, PTO shaft transmission, reversible discharge system, discharge height adjustment, driving system of rolling fingers for loosening material, side discharge auger, auger for wilted forage (optional), safety system with safety pins for transmission protection, tandem wheel system, wheels and agricultural tires 10,5 x 65 x 16, required revolution at PTO of 540 RPM and required power at PTO starting from 55 hp.



The technical data and images are only for guidance purposes. In an effort to provide products that meet customer needs, the JF reserves the right to update them at any time without preview notice.