



Triplex hydraulic forklifts

CM 30TBCH



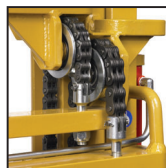
TRIPLEX

*Triplex hydraulic forklift suitable to high power tractors.
Very sturdy, it provides the operator with great visibility.*

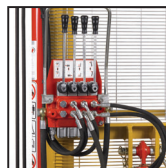
- Cylindrical roller bearings
- Four "Fleyer" lifting chains
- "H" shaped hot rolled steel profiles
- Two lateral double effect lifting cylinders
- Cat. 3 three-point linkage
- Distributor with 4 levers
- FEM side shift sliding on bronze pads
- FEM forks
- Tilting cylinder with adjustable junction
- Connecting hoses to the tractor



Straight roller radial bearings



"Fleyer" type lifting chains



Distributor with 4 levers



FEM forks



FEM side shift pads



FEM side shift



Hot-rolled steel profiles

CM 30 TBCH

Model	Load capacity Kg	Lifting height mm	Overall dimensions mm	Weight Kg
30 TBCH 2700	3000	2700	1820	820
30 TBCH 3200	3000	3200	1985	870
30 TBCH 3600	3000	3600	2120	915
30 TBCH 4000	3000	4000	2250	960
30 TBCH 4500	3000	4500	2420	1040
30 TBCH 5200	3000	5200	2650	1130
30 TBCH 6000	3000	6000	2920	1220