



Triplex hydraulic forklifts

CM 25TBCH



Triplex, high capacity, hydraulic forklift suitable to high power tractor. Sturdy and balanced. Provide the operator with great visibility.

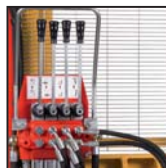
- Cylindrical roller bearings
- Four "Fleyer" lifting chains
- "H" shaped hot rolled steel profiles
- Two lateral double effect lifting cylinders
- Cat.2/3 three point linkage
- Distributor with 4 levers
- FEM side shift sliding on bronze pads
- FEM forks
- Tilting cylinder with adjustable junction
- Connecting hoses to the tractor



Straight roller radial bearings



"Fleyer" type lifting chains



Distributor with 4 levers



FEM forks



FEM side shift



FEM side shift pads



Hot-rolled steel profiles

CM 25TBCH

Model	Load capacity Kg	Lifting height mm	Overall dimensions mm	Weight Kg
25 TBCH 2700	2500	2700	1700	715
25 TBCH 3200	2500	3200	1850	760
25 TBCH 3600	2500	3600	2000	795
25 TBCH 4000	2500	4000	2150	840
25 TBCH 4500	2500	4500	2300	890
25 TBCH 5200	2500	5200	2550	985
25 TBCH 6000	2500	6000	2800	1185